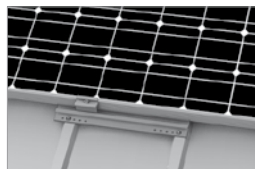
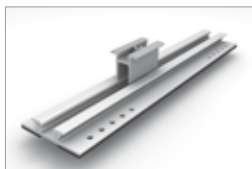
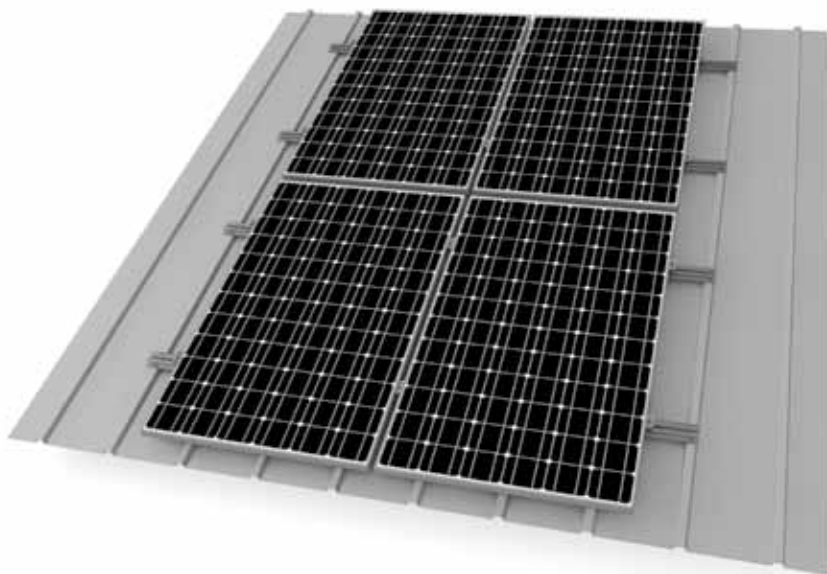


Mounting systems for solar technology



K2 SYSTEMS  
**SLOPED ROOF SYSTEMS**  
**MINIRAIL SYSTEM**

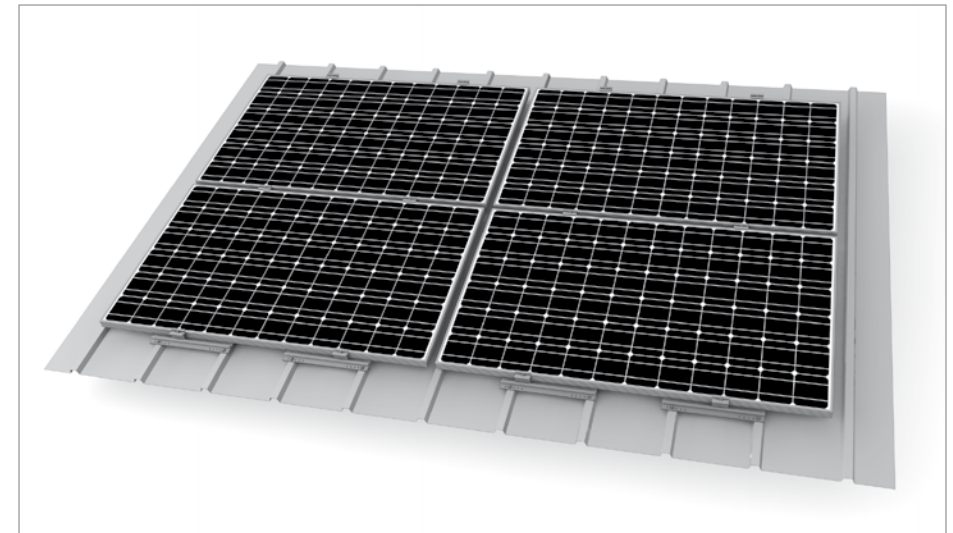
## MINIRAIL SYSTEM

- K2 MiniRail System for trapezoidal sheet metal roofs
- Simple and extremely fast assembly from above
- Very attractive price-performance ratio
- high flexibility with adjustable clamp
- Suitable for all module frames (34-50 mm) and installation types (landscape and portrait), no additional components required.
- High level of planning security due to low number of simple system components
- Modular structure suitable for any system size
- Geometry optimised for K2 system components
- Small components for optimal warehousing, transport and installation

### Technical data



Field of application	Sloped roof with 5 ° - 60 ° roof pitch
Roofing	Minimum thickness of 0.5mm for steel sheeting and a minimum thickness of 0.8mm for aluminium sheeting bead spacing 183 - 350 mm, bead width min. 27 mm
PV modules	Suitable for all standard module types
Module orientation	Portrait / Landscape
Material	Aluminium (EN AW-6063 T66)
Connecting elements	Stainless steel screws A2-70, plastic PA66 GF35
Roof connection	Technically approved self-tapping screws
Static principles	Calculation principles in accordance with Eurocode 9 - dimensioning and construction of aluminium structures, Load assumption in accordance with DIN 1055 Teil 4 & 5 / Eurocode 1
System components	K2 MiniRail Set, self-tapping screws



Detail illustration - MiniRail Landscape



Detail illustration - MiniRail for module frames 35 - 50 mm